

Midsomer Norton Greenway

ASH DIE BACK FELLING

From 4th
March 2024

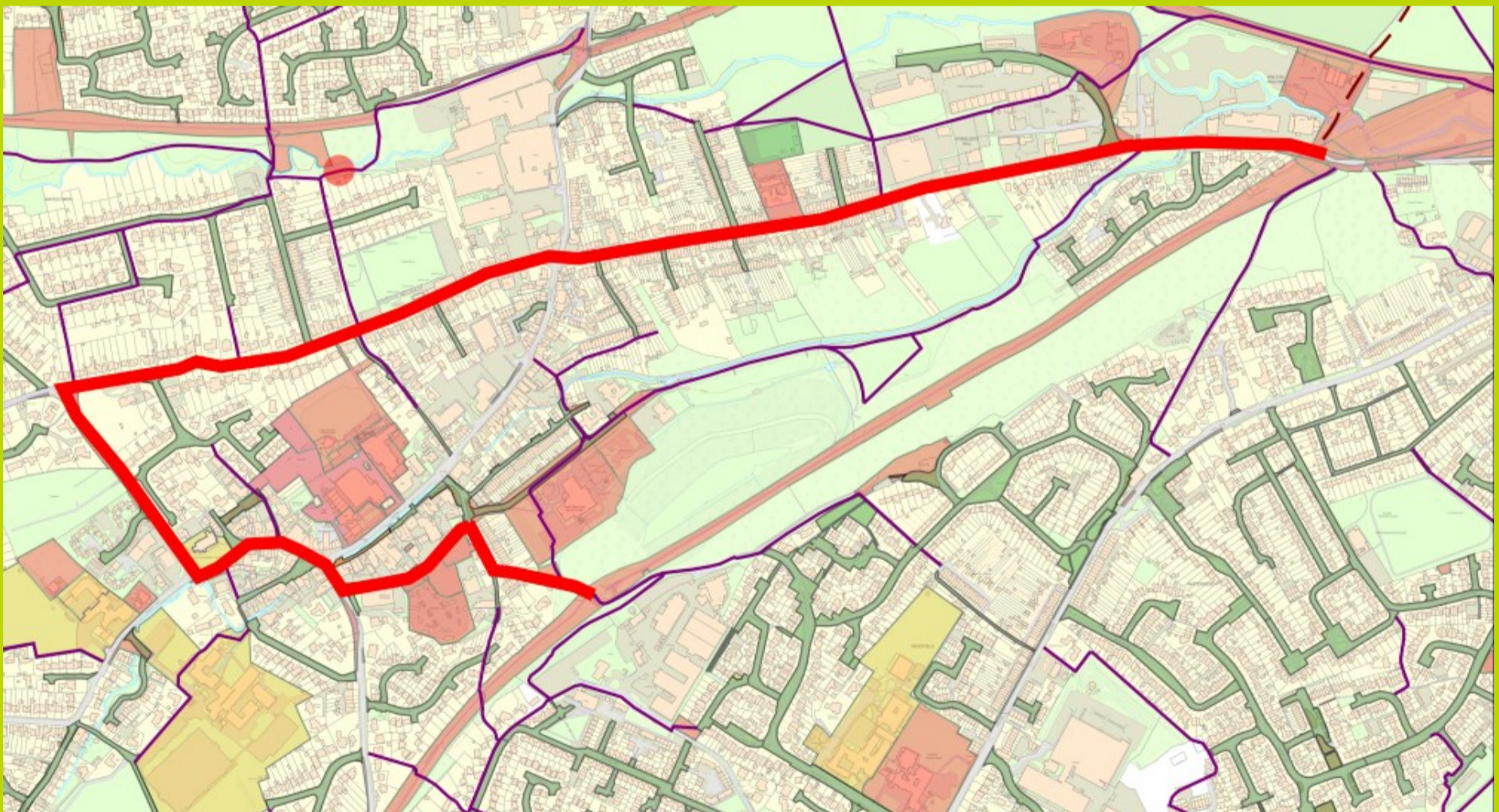
17 May 2021 at 15:15:21

NOTICE

This section of the Greenway from Pit Road to Somervale Road will be closed Monday to Friday between 8.30am and 3pm in the interest of public safety whilst the Ash trees infected with Ash Die Back Disease are being felled. Diversions for cyclists and pedestrians are shown by a red line on the plan below. The tree works are expected to take 1-2 weeks.

Trees will be checked for nesting birds and if found the tree will be left undisturbed until the chicks have fledged. Restocking will be included in the tree planting programme.

We apologise for any inconvenience this may cause whilst this essential work is carried out and appreciate your cooperation in following signs and the advice of the tree team to help keep everyone safe.



**Bath & North East
Somerset Council**

Improving People's Lives

There is more information on Ash Die Back Disease on the Council's website.

For information relating to the works please contact Council Connect 01225 394041 or

Parks@bathnes.gov.uk